

# THE 2023/24 COLLECTION

*Proactive*<sup>®</sup>  
LEADING BRANDS



[proactiveclothing.com](https://proactiveclothing.com)

- 01. T-SHIRTS & TOPS**
- 13. POLOS & GOLF SHIRTS**
- 25. SHIRTS & BLOUSES**
- 41. CORPORATE COLLECTION**
- 53. FLEECE & KNITWEAR**
- 63. JACKET COLLECTION**



Lifestyle Tees  
Page 3



Katana  
Softshell Jacket  
Page 64



Beanies  
Page 104



High Vis Parka Jacket  
Page 83



Ladies' ActiveTop  
Page 75



Chef Hat  
Page 92

- 71.        ACTIVEWEAR**
- 77.        WORKWEAR COLLECTION**
- 85.        MEDICAL & SERVICE COLLECTION**
- 91.        CHEF COLLECTION**
- 97.        BEAUTY COLLECTION**
- 101.      HEADWEAR & BAG COLLECTION**

# T-SHIRTS & TOPS



# LIFESTYLE V-NECK T-SHIRT

URBAN UNISEX STYLE: **CTV3**

FABRIC: Combed polycotton - single knit (140g)



HEAVYWEIGHT UNISEX STYLE: **CTV4**

FABRIC: Solid colours - 100% Combed cotton - single knit (160g)  
 Melange colours - Combed polycotton - single knit (160g)



ADULT SIZES: XS - S - M - L - XL - 2XL - 3XL - 4XL - 5XL

FEATURES:



Size tag with removable GLOBAL CITIZEN label

Comfortable V-neck line perfect for neck label branding

Quality fabric with reactive dyed cotton fibres

Regular modern fit



REACTIVE DYED





LIFESTYLE TEE FEATURES:



Size tag with removable GLOBAL CITIZEN label

Comfortable scooped neck line perfect for label branding

Quality fabric with reactive dyed cotton fibres

Regular modern fit



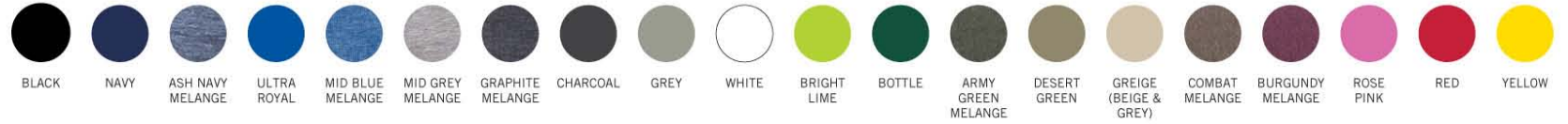
# LIFESTYLE T-SHIRTS



## URBAN UNISEX STYLE - ADULTS: CTH5

FABRIC: Combed polycotton - single knit (140g)

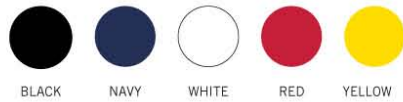
SIZES: XS - S - M - L - XL - 2XL - 3XL - 4XL - 5XL



## URBAN UNISEX STYLE - YOUTH: CTH7

FABRIC: Combed polycotton - single knit (140g)

YOUTH SIZES: 3/4yr - 5/6yr - 7/8yr - 9/10yr - 11/12yr

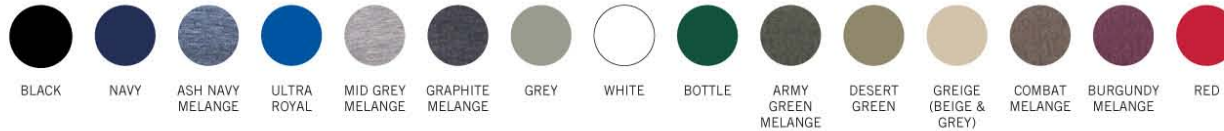


## HEAVYWEIGHT UNISEX STYLE - ADULTS: CTH6

FABRIC: SOLID COLOURS - 100% Super Cotton - single knit (160g)

MELANGE COLOURS - Polycotton

SIZES: XS - S - M - L - XL - 2XL - 3XL - 4XL - 5XL



# 145G CLASSIC COTTON T-SHIRT

---

UNISEX STYLE: **CTH201**

FABRIC: 100% Cotton - single knit

ADULT SIZES: S - M - L - XL - 2XL - 3XL - 4XL - 5XL

**FEATURES:**

- Double stitched hem and sleeves
- Taped shoulders and neckline
- Short sleeve with 1x1 neck rib



BLACK



NAVY





# RACERBACK TOP

LADIES' STYLE: **LRB1**



ADULT SIZES: S - M - L - XL - 2XL - 3XL

FABRIC: Polycotton interlock (195g)

**FEATURES:**

- Stretchy polycotton interlock fabric created from the best quality yarns for coolness and durability
- Bound armhole and neckline
- Double stitched hem
- Curved waistline



COLOURS AVAILABLE:



# LIFESTYLE VESTS

MENS' STYLE: **MVC1**

LADIES' STYLE: **LVC4**



FABRIC: Combed polycotton - single knit (140g)

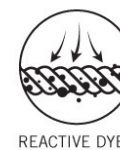
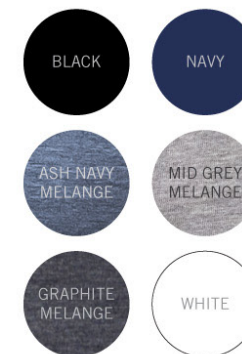
ADULT SIZES: XS - S - M - L - XL - 2XL - 3XL

**FEATURES FOR BOTH STYLES:**

- Size tag with removable GLOBAL CITIZEN label
- Slim fit and slight stretch
- Quality fabric with reactive dyed cotton fibres
- Comfortable scooped neckline and neck yoke perfect for label branding



COLOURS AVAILABLE:



**ULTIMATE**  
**T**  
**LTD**



# FASHION FIT T-SHIRTS

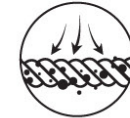
MEN'S SHORT SLEEVE: **CTL1**  
MEN'S LONG SLEEVE: **CTL4**  
LADIES' SHORT SLEEVE: **LTL1**  
LADIES' LONG SLEEVE: **LTB4**

FABRIC: SOLID COLOURS - 100% Super Cotton - single knit (150g)  
MELANGE COLOURS - Polycotton

ADULT SIZES: S - M - L - XL - 2XL - 3XL (Men's short sleeve available in XS)

## FEATURES:

- Slim fit
- Size tag with no branding and comfortable scooped neckline and neck yoke perfect for label branding
- Removable label in side seam
- Quality fabric with reactive dyed cotton fibres
- Short sleeve style has contrast neck tape



REACTIVE DYED



## COLOURS AVAILABLE IN SHORT SLEEVE:



## COLOURS AVAILABLE IN LONG SLEEVE:





# COOLMAX® SPORTS T-SHIRT

UNISEX STYLE: **MMT5**



FABRIC: Mesh polyester (96% COOLMAX® polyester, 4% LYCRA® Elastane)

ADULT SIZES: S - M - L - XL

### FEATURES:

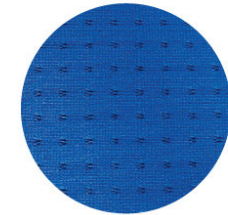
- Moisture wicking
- Eyelet design allows maximum breathability
- Engineered for everyday comfort and performance
- Quick dry
- Authentic COOLMAX® swingtag



MOISTURE WICKING



WASH & WEAR



Breathable eyelet design



ROYAL



ROYAL/BLACK



BLACK/ROYAL



YELLOW



NAVY/GREY



GREY/NAVY



COOLMAX® is a trademark of The LYCRA Company

# LIFESTYLE SPORTS T-SHIRT

UNISEX STYLE: **MMT6**



FABRIC: 100% Polyester Interlock - 155g

ADULT SIZES: XS - S - M - L - XL - 2XL - 3XL

## FEATURES:

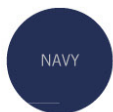
- Moisture wicking
- Modern sports fit
- Ideal for sporting activities and team building events
- High quality moisture management fabric creates a cool, dry zone next to the skin
- Removable label allows branding freedom



MOISTURE WICKING



WASH & WEAR



# CLASSIC SPORTS T-SHIRTS

ADULT STYLE: **MMT4**

YOUTH STYLE: **KMT4**



FABRIC: 100% polyester honeycomb eyelet (130g)

ADULT SIZES: S - M - L - XL - 2XL - 3XL

YOUTH SIZES: 4-5y, 5-6y, 6-7y, 7-8y, 8-9y, 9-10y, 10-11y, 11-12y, 12-13y



MOISTURE WICKING



WASH & WEAR

FEATURES:



Contrast neck tape

High quality moisture wicking fabric which creates a cool, dry zone next to the skin

Crease resistant fabric with eyelets:

COLOURS AVAILABLE IN ADULTS' STYLE:



COLOURS AVAILABLE IN YOUTH STYLE:





Moisture Management  
**ULTIMATE**  
**T**

# POLOS & GOLF SHIRTS

---





# CLASSIC HEAVY WEIGHT POLOS

MEN'S STYLE: **GMFP8**

LADIES' STYLE: **GLFP8**

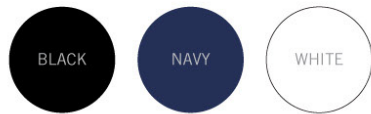


FABRIC: Polycotton pique knit (240g)

ADULT SIZES: S - M - L - XL - 2XL - 3XL - 4XL - 5XL

## FEATURES:

- Knitted collar
- Double stitched hem and sleeves
- Produced from the best quality yarns for durability





The logo for TEE & COTTON. It features a stylized red and black graphic element on the left, followed by the text "TEE &" in a serif font, and "COTTON" in a larger serif font below it, with a registered trademark symbol (®) to the right.

# CLASSIC PIQUE KNIT POLOS

MEN'S STYLE: **PKD201**

LADIES' STYLE: **LPK2**

YOUTH STYLE: **KPK2**



FABRIC: Combed polycotton pique knit (175g)

ADULT SIZES: S - M - L - XL - 2XL - 3XL - 4XL - 5XL

YOUTH SIZES: 4/5yr - 5/6yr - 6/7yr - 7/8yr - 8/9yr - 9/10yr - 10/11yr - 11/12yr - 12/13yr

## FEATURES:

- Knitted collar using high quality yarns to maintain shape
- Superior quality pique knit fabric produced from the best yarns for durability
- Double stitched hem and sleeves
- Men's style has pockets on request
- Ladies' style has side slits for comfort



## COLOURS AVAILABLE IN ADULTS:



## COLOURS AVAILABLE IN YOUTH SIZES:



# LONG SLEEVE CLASSIC PIQUE KNIT POLO

STYLE: PKD3

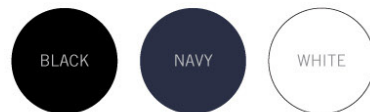


FABRIC: Combed polycotton pique knit (175g)

SIZES: S - M - L - XL - 2XL - 3XL

## FEATURES:

- Knitted collar using high quality yarns to maintain shape
- Superior quality pique knit fabric products from the best yarns for durability
- Double stitched hem and sleeves
- Classic fit
- Pockets on request



TEE &  
COTTON®



# GC STRATUS POLO

MEN'S STYLE: **GMFP9**

LADIES' STYLE: **GLFP9**



FABRIC: Combed polycotton pique knit (175g)

SIZES: S - M - L - XL - 2XL - 3XL - 4XL - 5XL

## FEATURES:

- Knitted collar
- Contrast placket, side panels and piping detail
- Produced from the best quality yarns for durability
- Ladies' style has side slits for ease of movement



BLACK/LIME



BLACK/RED



BLACK/ROYAL



**GC** GLOBAL  
CITIZEN



FABRIC: 100% Combed cotton (170g)

ADULT SIZES: S - M - L - XL - 2XL - 3XL - 4XL - 5XL

## DELTA GOLFER

MEN'S STYLE: **CGU6**



### FEATURES:

- Knitted collar and cuffs with refined contrast trim
- 100% Combed cotton produced from the best quality yarns for coolness
- Side slits for comfort
- Classic modern fit
- Pockets on request



## PENCIL STRIPE GOLFER

MEN'S STYLE: **CGU3**



### FEATURES:

- Knitted collar and cuffs with contrast trim
- 100% Combed cotton produced from the best quality yarns for coolness
- Side slits for comfort
- Classic fit
- Pockets on request



# FLAT PIPING POLO

MEN'S STYLE: **MFP5**

LADIES' STYLE: **LSB5**



FABRIC: 100% Combed cotton (170g)

SIZES: S - M - L - XL - 2XL - 3XL - 4XL - 5XL

## FEATURES:

- 100% Combed cotton produced from the best quality yarns for coolness and strength
- Contrast stitching and flat piping detail
- Side slits for comfort
- Men's style - classic fit and pockets on request
- Ladies' style has an elongated open placket for comfort and a tailored fit





## CLASSIC MICRODOT POLO

STYLE: **SIE8**

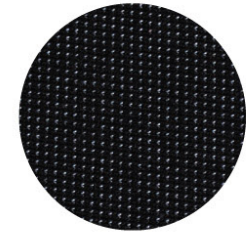


FABRIC: Cotton poly microdot (180g)

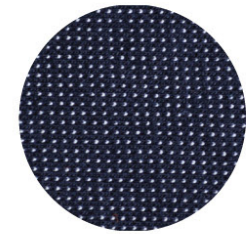
ADULT SIZES: S - M - L - XL - 2XL - 3XL - 4XL - 5XL

### FEATURES:

- Classic, colourfast surface interest fabric produced from top quality yarns
- Contrast collar tip and piping on sleeves
- Engraved matching buttons
- Pockets on request
- Classic fit



BLACK/WHITE



NAVY/WHITE



# LIFESTYLE SPORTS POLO

STYLE: MSP2



FABRIC: 100% Polyester Interlock - 155g

SIZES: XS - S - M - L - XL - 2XL - 3XL

**FEATURES:**

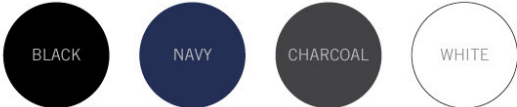
- Moisture wicking
- Modern sports fit
- Ideal for sporting activities and team building events
- High quality moisture management fabric creates a cool, dry zone next to the skin
- Removable label allows branding freedom



MOISTURE WICKING



WASH & WEAR





MOISTURE WICKING



WASH & WEAR

FABRIC: 100% Polyester moisture wicking pique knit

ADULT SIZES: S - M - L - XL - 2XL - 3XL - 4XL - 5XL

**FEATURES:**

- High quality fabric keeps you cool and dries quickly through evaporation and is crease resistant
- Creates a cool, dry zone next to the skin



## GC MATRIX POLO

MEN'S STYLE: **GMMX7**  
LADIES' STYLE: **GLMX7**

**FEATURES:**

- Contrasting placket and neck binding



ORANGE  
/GRAPHITE



## GC SYNERGY POLO

MEN'S STYLE: **GMMX8**  
LADIES' STYLE: **GLMX8**

**FEATURES:**

- Contrasting trim on collar, neck binding and sleeves



LIME  
/NAVY



RED  
/BLACK



## GC VECTOR POLO

MEN'S STYLE: **GMMX9**  
LADIES' STYLE: **GLMX9**

**FEATURES:**

- Contrasting inserts on shoulders and sides



CYAN  
/GRAPHITE





# SHIRTS & BLOUSES

# ISABELLA BLOUSE

STYLE: ISA1



FABRIC: Koshiho (100% Polyester)

SIZES: 28 - 30 - 32 - 34 - 36 - 38 - 40 - 42 - 44 - 46

## FEATURES:

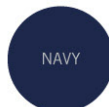
- Flattering fit for most body shapes
- Elongated placket
- Mandarin collar
- Pleated front
- Back neck pleats



WASH & WEAR



BLACK



NAVY



MID GREY



**GC** GLOBAL  
CITIZEN<sup>®</sup>



# ICON WOVEN SHIRT

MEN'S SHORT SLEEVE: **MWS8**  
MEN'S LONG SLEEVE: **MWS9**  
LADIES' 3/4 SLEEVE: **LWS8**



FABRIC: Polycotton

ADULT SIZES: S - M - L - XL - 2XL - 3XL - 4XL - 5XL

## FEATURES:

- Reinforced top stitching
- Engraved matching buttons
- Men's style has a left breast pocket
- Ladies' style has a tapered waistline and three quarter sleeves with cuffs



# CLASSIC WOVEN SHIRT

MEN'S SHORT SLEEVE: **MWS1**  
MEN'S LONG SLEEVE: **MWS2**  
LADIES' SHORT SLEEVE: **LWS1**  
LADIES' LONG SLEEVE: **LWS2**



FABRIC: Polycotton with softwash treatment

ADULT SIZES: S - M - L - XL - 2XL - 3XL - 4XL - 5XL

## FEATURES:

- Reinforced top stitching
- Pearlised engraved matching buttons
- Easy-wear fabric is treated to create a soft feel
- Men's style has a left breast pocket
- Ladies' style has a tapered waistline and a classic fit



WASH & WEAR



MWS2



MWS1



LWS2



LWS1







## PRIME WOVEN SHIRT

MEN'S SHORT SLEEVE: **WSC202**

MEN'S LONG SLEEVE: **WSC203**



FABRIC: Cotton rich

ADULT SIZES: XS - S - M - L - XL - 2XL - 3XL - 4XL - 5XL

### FEATURES:

- Reinforced top stitching
- Superior quality fabric for comfort and coolness
- Men's style has a button down designer collar and a single pocket
- Ladies' style has double pockets, three quarter sleeves and a relaxed fit



WHITE



BLUE\*

\*Due to the nature of this fabric, blues may vary in shade.

# HARPER BLOUSE

LADIES' STYLE: HAR1



FABRIC: Koshiho (100% Polyester)

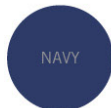
SIZES: 28 - 30 - 32 - 34 - 36 - 38 - 40 - 42 - 44 - 46

## FEATURES:

- Flowy design complements most body shapes
- Trendy wide cuffs
- Pleated back



BLACK



NAVY



MID GREY





## CAMERON SHIRT

MEN'S SHORT SLEEVE: **CAS20PC**  
MEN'S LONG SLEEVE: **CAS40PC**



FABRIC: Superior quality polycotton

ADULT SIZES: S - M - L - XL - 2XL - 3XL - 4XL - 5XL

### FEATURES:

- Superior quality polycotton
- Left breast pocket
- Button down collar
- Classy engraved VANGARD buttons



## ROSELINA BLOUSE

LADIES' SHORT SLEEVE: **ROB20PC**  
LADIES' LONG SLEEVE: **ROB40PC**



FABRIC: Superior quality polycotton

ADULT SIZES:  
28 - 30 - 32 - 34 - 36 - 38 - 40 - 42 - 44 - 46 - 48 - 50 - 52 - 54

### FEATURES:

- Superior quality polycotton
- Front and back darts
- Classy engraved DUCHESS buttons



## CAMERON SHIRT - STRIPE DESIGN 5

MEN'S SHORT SLEEVE: **CAS2S5**  
MEN'S LONG SLEEVE: **CAS4S5**



FABRIC: Cotton rich yarn dye

ADULT SIZES: S - M - L - XL - 2XL - 3XL - 4XL - 5XL

### FEATURES:

- Left breast pocket
- Button down collar
- Classy engraved VANGARD buttons
- Comfortable cotton rich yarn dye fabric that is superior quality
- Crisp, classic stripe design



## DONNA BLOUSE - STRIPE DESIGN 5

LADIES' SHORT SLEEVE: **DOB2S5**  
LADIES' LONG SLEEVE: **DOB4S5**



FABRIC: Cotton rich yarn dye

### ADULT SIZES:

28 - 30 - 32 - 34 - 36 - 38 - 40 - 42 - 44 - 46 - 48 - 50 - 52 - 54

### FEATURES:

- Front and back darts
- Classy engraved DUCHESS buttons
- Comfortable cotton rich yarn dye fabric that is superior quality
- Crisp, classic stripe design





WASH & WEAR



STRETCH



# EMMA BLOUSE

LADIES' SHORT SLEEVE: **EMM1**  
LADIES' LONG SLEEVE: **EMM2**



FABRIC: Polyspandex

ADULT SIZES: 28 - 30 - 32 - 34 - 36 - 38 - 40 - 42 - 44 - 46

**FEATURES:**

- Flattering silhouette and mandarin collar
- Stretchy fabric offering wash & wear properties
- Long sleeve can be pulled up to 3/4 sleeves



# MATTHEW SHIRT - CHECK DESIGN 1

MEN'S SHORT SLEEVE: **MAS2C1**  
MEN'S LONG SLEEVE: **MAS4C1**

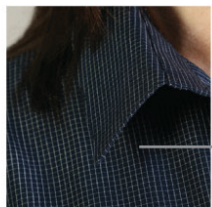


FABRIC: Cotton rich yarn dye

ADULT SIZES: S - M - L - XL - 2XL - 3XL - 4XL - 5XL

## FEATURES:

- Left breast pocket
- Classy engraved VANGARD buttons
- Comfortable cotton rich yarn dye fabric that is superior quality



Classic graph check in navy



NAVY

# VANGARD<sup>®</sup>

# ROSELINA BLOUSE - CHECK DESIGN 1

LADIES' SHORT SLEEVE: **ROB2C1**  
LADIES' LONG SLEEVE: **ROB4C1**



FABRIC: Cotton rich yarn dye

ADULT SIZES: 28 - 30 - 32 - 34 - 36 - 38 - 40 - 42 - 44 - 46 - 48 - 50 - 52 - 54

## FEATURES:

- Front and back darts
- Classy engraved DUCHESS buttons
- Comfortable cotton rich yarn dye fabric that is superior quality





## CAMERON SHIRT - CHECK DESIGN 3

MEN'S SHORT SLEEVE: **CAS2C3**  
MEN'S LONG SLEEVE: **CAS4C3**



FABRIC: Cotton rich yarn dye

ADULT SIZES: S - M - L - XL - 2XL - 3XL - 4XL - 5XL

### FEATURES:

- Smart tattersall check design
- Button down collar
- Left breast pocket
- Classy engraved VANGARD buttons
- Comfortable cotton rich yarn dye fabric that is superior quality



SKY



CHARCOAL

## DONNA BLOUSE - CHECK DESIGN 3

LADIES' 3/4 SLEEVE: **DOB3C3**



FABRIC: Cotton rich yarn dye

ADULT SIZES: 28 - 30 - 32 - 34 - 36 - 38 - 40 - 42 - 44 - 46 - 48 - 50 - 52 - 54

### FEATURES:

- Front and back darts
- Classy engraved DUCHESS buttons
- Smart tattersall check design
- Comfortable cotton rich yarn dye fabric that is superior quality



SKY



CHARCOAL



# TRACTION PITCREW SHIRT

MEN'S PRODUCT CODE: **MWP1**

LADIES' PRODUCT CODE: **LWP1**



FABRIC: Polycotton with softwash treatment

ADULT SIZES: S - M - L - XL - 2XL - 3XL - 4XL - 5XL

## FEATURES:

- Reinforced top stitching
- Styled chest piping detail
- Engraved matching buttons
- Easy-wear fabric is treated to create a soft feel
- Men's style has a single pocket



BLACK/ROYAL



WASH & WEAR



# SAVANNAH BUSH SHIRT



MEN'S PRODUCT CODE: **MBS2**

LADIES' PRODUCT CODE: **LBS2**



FABRIC: 100% Cotton

SIZES: S - M - L - XL - 2XL - 3XL - 4XL - 5XL

## FEATURES:

- 100% Durable cotton - all terrain fabric
- Double pleated pockets with buttons
- Reinforced double stitching



# CORPORATE COLLECTION



# JOHN & PAULA WAISTCOAT

MEN'S STYLE: **JOW1**

LADIES' STYLE: **PAW1**



FABRIC: High quality mini matt fabric (100% polyester)

MEN'S SIZES: S - M - L - XL - 2XL - 3XL - 4XL - 5XL

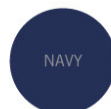
LADIES' SIZES: 28 - 30 - 32 - 34 - 36 - 38 - 40 - 42 - 44 - 46 - 48 - 50 - 52 - 54

## FEATURES:

- Welt pockets
- Paula has a panelled waistline
- Fabric has wash & wear properties
- Smart and comfortable design



WASH & WEAR



DUCHESS<sup>®</sup>

GC GLOBAL  
CITIZEN<sup>®</sup>



WASH & WEAR



## HARVEY JACKET

MEN'S STYLE: **HRV1**

FABRIC: 100% Polyester

SIZES: 32 - 34 - 36 - 38 - 40 - 42 - 44 - 46 - 48 - 50

FEATURES:

- Front side pockets and chest pocket
- Fully lined
- 3 Internal pockets
- Fabric has wash & wear properties



LADIES' LONG SLEEVE STYLE: **ROJ4**

LADIES' SHORT SLEEVE STYLE: **ROJ2**

FABRIC: High quality mini matt fabric (100% polyester)

SIZES: 28 - 30 - 32 - 34 - 36 - 38 - 40 - 42 - 44 - 46 - 48 - 50 - 52 - 54

FEATURES:

- Mini matt fabric has wash & wear properties
- Jetted pockets
- Fully lined



## FREYA GILET

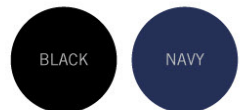
LADIES' STYLE: **FRJ1**

FABRIC: High quality mini matt fabric (100% polyester)

SIZES: 28 - 30 - 32 - 34 - 36 - 38 - 40 - 42 - 44 - 46 - 48 - 50 - 52 - 54

FEATURES:

- Mini matt fabric has wash & wear properties
- Long length with side pockets
- Ideally worn over a blouse or top





Full waistband, zip and button

Flattering fit

Fabric contains spandex for stretch and is durable with wash & wear properties



STRETCH



WASH & WEAR



## BENGALINE PANTS

LADIES' STYLE: **LBT1**

SIZES: 30 - 32 - 34 - 36 - 38 - 40 - 42 - 44

FABRIC: Polyester and spandex



Full waistband with belt loops, zip and 2 buttons

Smart, stylish design

Slight stretch for comfort



STRETCH



WASH & WEAR



## ELLA PANTS

LADIES' STYLE: **ELP1**

SIZES: 28 - 30 - 32 - 34 - 36 - 38 - 40 - 42 - 44 - 46 - 48 - 50 - 52 - 54

FABRIC: Polyester rayon and spandex





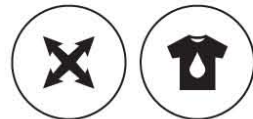


Full waistband with belt loops, self fabric belt, zip and button



Easy-wear fabric that offers stretch for comfort

Stylish wide leg



STRETCH WASH & WEAR

## ZOE PANTS

LADIES' STYLE: **ZOE1**

SIZES: 28 - 30 - 32 - 34 - 36 - 38 - 40 - 42 - 44 - 46

FABRIC: Barbie (95% Polyester /5% Spandex)



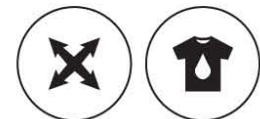
Full waistband, zip and button

Comfortable side pockets

Smart, modern design

Easy-wear fabric that offers stretch for comfort

Slim leg with a modern, smart style



STRETCH WASH & WEAR



## EVA PANTS

LADIES' STYLE: **EVA1**

SIZES: 28 - 30 - 32 - 34 - 36 - 38 - 40 - 42 - 44 - 46

FABRIC: Barbie (95% Polyester /5% Spandex)





- BLACK
- NAVY
- CHARCOAL

Back elasticated waist

Roomy side pockets

Fabric is durable with wash & wear properties



**DUCHESS**

## SALIS PANTS

LADIES' STYLE: **SAP4**

SIZES: 28 - 30 - 32 - 34 - 36 - 38 - 40 - 42 - 44 - 46 - 48 - 50 - 52 - 54

FABRIC: Mini matt - 100% polyester



- BLACK
- NAVY

Full waistband with zip and 2 buttons

Fabric is durable with wash & wear properties

Slight bootleg flare



**DUCHESS**

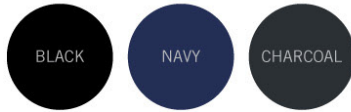
## PATRICIA PANTS

LADIES' STYLE: **PAP4**

SIZES: 28 - 30 - 32 - 34 - 36 - 38 - 40 - 42 - 44 - 46 - 48 - 50 - 52 - 54

FABRIC: Mini matt - 100% polyester





Semi-elasticated waist with high waistband, front zip and button

Side slanted pockets

Fabric is durable with wash & wear properties



WASH & WEAR

DUCHESS

## BERLEI PANTS

LADIES' STYLE: **BEP4**

SIZES: 28 - 30 - 32 - 34 - 36 - 38 - 40 - 42 - 44 - 46 - 48 - 50 - 52 - 54

FABRIC: Mini matt - 100% polyester



Fully elasticated waistband

Comfortable side pockets

Classic corporate style suitable for many industries

Fabric is durable with wash & wear properties



WASH & WEAR

DUCHESS

## TERRY PANTS

LADIES' STYLE: **TEP4MST**

SIZES: 28 - 30 - 32 - 34 - 36 - 38 - 40 - 42 - 44 - 46 - 48 - 50 - 52 - 54

FABRIC: Mini matt - 100% polyester





Top quality durable zip

Classic five pocket style  
(with double back pockets)

High quality denim with a slight stretch

Complementary top stitching



## STRETCH JEANS

MEN'S STYLE: **JFP2**  
LADIES' STYLE: **LJF1**

SIZES: 28 - 30 - 32 - 34 - 36 - 38 - 40 - 42 - 44

FABRIC: 98% Cotton and 2% spandex



STRETCH

WASH & WEAR



- Double back pockets with buttons
- Front pleats and side pockets
- Belt loops



## MIKE PANTS

MEN'S STYLE: **MIK1**

SIZES: 28 - 30 - 32 - 34 - 36 - 38 - 40 - 42 - 44

FABRIC: 100% Polyester



- Double back pockets
- Classic 5 pocket style and durable zip
- Superior quality polycotton



## 5 POCKET CHINOS

MEN'S STYLE: **CPF4**

SIZES: 28 - 30 - 32 - 34 - 36 - 38 - 40 - 42 - 44

FABRIC: Polycotton





## CLAIRE DRESS

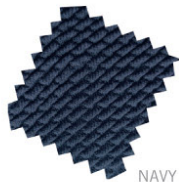
LADIES' STYLE: **CLD1**

SIZES: 28 - 30 - 32 - 34 - 36 - 38 - 40 - 42 - 44 - 46 - 48 - 50 - 52 - 54

FABRIC: 100% Waffle polyester stretch

FEATURES:

- Flattering design
- Body contouring shape
- Take one size smaller than usual for a slim, modern fit



NAVY



CHARCOAL



BLACK



## SARAH DRESS

LADIES' STYLE: **SAR1**

SIZES: 28 - 30 - 32 - 34 - 36 - 38 - 40 - 42 - 44 - 46 - 48 - 50 - 52 - 54

FABRIC: 100% Waffle polyester stretch

FEATURES:

- Flattering design
- Contouring waistline
- Flowing skirt is flattering for all body types



NAVY



BLACK



STRETCH



WASH & WEAR



**DUCHESS**<sup>®</sup>



Fully lined with a concealed back zip

Flattering design

Double front and back pleats give the garment a stylish flare



## LIZE SKIRT

LADIES' STYLE: **LIZ6**

SIZES: 28 - 30 - 32 - 34 - 36 - 38 - 40  
42 - 44 - 46 - 48 - 50 - 52 - 54

FABRIC: Mini matt - 100% polyester



Semi-elasticated waist

Front darts

Fully lined and concealed back zip

Back vent pleat for ease of movement



## DIDI SKIRT

LADIES' STYLE: **DIZ6**

SIZES: 28 - 30 - 32 - 34 - 36 - 38 - 40  
42 - 44 - 46 - 48 - 50 - 52 - 54

FABRIC: Mini matt - 100% polyester



Flattering design with a slimming waistband

Back vent pleat for ease of movement



Take one size smaller than usual for a slim, modern fit

## AVA SKIRT

LADIES' STYLE: **AVZ1**

SIZES: 28 - 30 - 32 - 34 - 36 - 38 - 40  
42 - 44 - 46 - 48 - 50 - 52 - 54

FABRIC: 100% Waffle polyester stretch





# FLEECE & KNITWEAR



# CLASSIC MICROFIBRE POLAR FLEECE

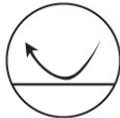
MEN'S STYLE: **PFM3**  
LADIES' STYLE: **LPM201**



INSULATING



WASH & WEAR



WIND RESISTANT



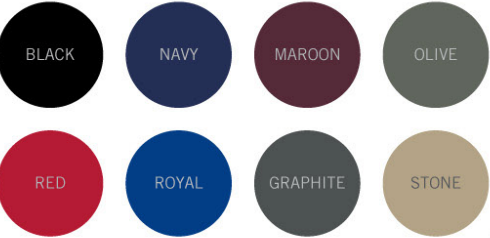
ANTI-PILL

FABRIC: Anti-pill microfibre polar fleece (240g)

ADULT SIZES: S - M - L - XL - 2XL - 3XL - 4XL - 5XL

### FEATURES:

- Stand up collar
- Stylish zipper tags
- Long sleeve with full zip and pockets
- Anti-pill microfibre polar fleece traps heat and releases body moisture



# SABRE ANTI-PILL MICROFIBRE FLEECE

MEN'S STYLE: **PFM4**

LADIES' STYLE: **LPM4**



FABRIC: Anti-pill microfibre polar fleece - 240g

ADULT SIZES: S - M - L - XL - 2XL - 3XL - 4XL - 5XL

## FEATURES:

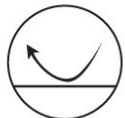
- Stand up collar
- Full zip with zipper tag
- Outer side pockets
- High quality anti-pill microfibre fleece traps heat and releases body moisture



INSULATING



WASH & WEAR



WIND RESISTANT



ANTI-PILL

# ZIP OFF SLEEVE POLAR FLEECE

MEN'S STYLE: **PFQ203**

LADIES' STYLE: **LFQ3**



FABRIC: Anti-pill microfibre polar fleece (240g)

SIZES: S - M - L - XL - 2XL - 3XL - 4XL - 5XL

## FEATURES:

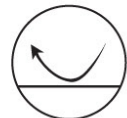
- Rubber zip puller
- Removable sleeves
- Stylish stand up collar
- Zip up cellphone pocket



INSULATING



WASH & WEAR



WIND RESISTANT



ANTI-PILL

# BELLE & BEAU SLEEVELESS FLEECE



MEN'S PRODUCT CODE (BEAU): **BMJ1**  
LADIES' PRODUCT CODE (BELLE): **BLJ1**

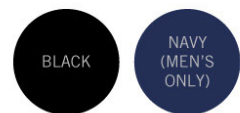


FABRIC: Anti-pill microfibre polar fleece - 240g

ADULT SIZES: XS - S - M - L - XL - 2XL - 3XL - 4XL - 5XL

## FEATURES:

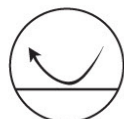
- Stand up collar
- Full zip with zipper tag
- Outer side and internal pockets
- High quality anti-pill microfibre fleece traps heat and releases body moisture



INSULATING



WASH & WEAR



WIND RESISTANT



ANTI-PILL

# GLADIUS PULLOVER HOODIE

UNISEX PRODUCT CODE: PFH4

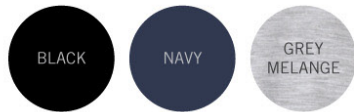


FABRIC : Black and Navy - 100% Cotton Brushed Fleece (280g)  
Grey melange - Polycotton Brushed Fleece (280g)

SIZES: XS - S - M - L - XL - 2XL - 3XL

## FEATURES:

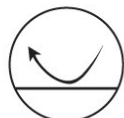
- Removable label
- Kangaroo pockets
- Ribbed cuffs and hem
- Gun metal eyelets with quality drawcord



INSULATING



WASH & WEAR



WIND RESISTANT



ANTI-PILL



## TRIDENT JERSEY

UNISEX SLEEVELESS STYLE: **JR11**  
UNISEX LONG SLEEVE STYLE: **JR12**

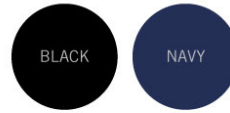


FABRIC: 10 gauge acrylic yarn

SIZES: 2XS - XS - S - M - L - XL - 2XL - 3XL - 4XL - 5XL

### FEATURES:

- V-neck design
- Ribbed neckline and waistline
- Long sleeve has ribbed cuffs
- Sleeveless has ribbed armholes



# PREMIUM JERSEY

SLEEVELESS STYLE: **JRI5**  
LONG SLEEVE STYLE: **JRI6**



FABRIC: 65% Acrylic yarn, 5% polyester and 30% wool blend with a soft feel

SIZES: S - M - L - XL - 2XL - 3XL - 4XL - 5XL

## FEATURES:

- V-neck design
- Ribbed neckline and waistline
- Long sleeve has ribbed cuffs
- Sleeveless has ribbed armholes
- High quality wool blend has a soft feel



**GC** GLOBAL  
CITIZEN<sup>®</sup>



WASH & WEAR    INSULATING



## CLASSIC CARDIGAN

LADIES' STYLE: **LKC1**

FABRIC: Superior quality soft-feel acrylic yarn

SIZES: S - M - L - XL - 2XL - 3XL

FEATURES:

- V-neck
- Ribbed hem and cuffs
- Classic and refined style
- Superior quality yarn with a soft-feel finish



WASH & WEAR



BLACK



NAVY

  
HIGHLAND BROOK®



# KELLY CARDIGAN

LADIES' STYLE: KEJ4



FABRIC: Superior quality soft-feel acrylic yarn

SIZES: S - M - L - XL - 2XL - 3XL

## FEATURES:

- V-neck
- Ribbed hem and cuffs
- Classic and refined style
- Superior quality yarn with a soft-feel finish
- Extended length for a comfortable fit



WASH & WEAR



BLACK



GRAPHITE



NAVY



DUCHESS<sup>®</sup>

# JACKET COLLECTION



# KATANA SOFTSHELL JACKET

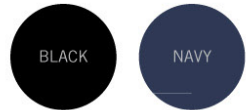
MEN'S STYLE: **MSS2**  
LADIES' STYLE: **LSS2**

FABRIC: 325g Poly pongee bonded with micro fibre polar fleece  
(96% Polyester 4% spandex)

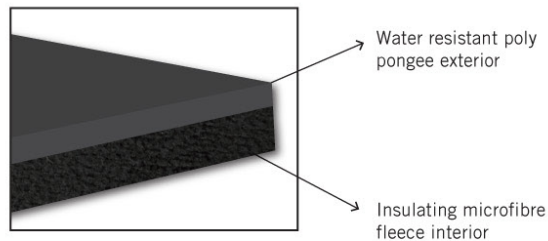
ADULT SIZES: S - M - L - XL - 2XL - 3XL - 4XL - 5XL

## FEATURES:

- Stand up collar
- 2 Side zipped pockets
- Inset sleeves create a smart casual look
- Inner fleece lining for insulation outer poly pongee with a breathable, water resistant finish
- Adjustable hook-and-loop cuffs on sleeves
- Handy chest zipped pocket on men's style



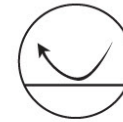
## SOFTSHELL FABRIC:



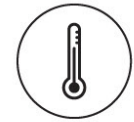
WASH & WEAR



WATER RESISTANT



WIND RESISTANT



INSULATING



**MAC**<sup>®</sup>  
ALL WEATHER



# CLASSIC SOFTSHELL JACKET

MEN'S STYLE: **MSS1**  
LADIES' STYLE: **LSS1**



FABRIC: 325g Poly pongee bonded with micro fibre polar fleece (100% Polyester)

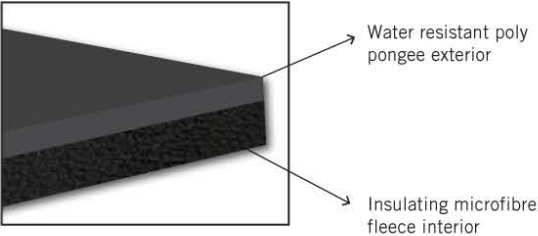
ADULT SIZES: S - M - L - XL - 2XL - 3XL - 4XL - 5XL

### FEATURES:

- Stand up collar
- 2 Side zipped pockets
- Inner fleece lining for insulation outer poly pongee with a breathable, water resistant finish
- Adjustable hook-and-loop cuffs on sleeves
- Utility zipped pocket on men's style



### SOFTSHELL FABRIC:



*Mac Jack*®



# ALL WEATHER MACJACKS

UNISEX STYLE: **AWJ202**

YOUTH STYLE: **KAW202**



FABRIC: Water resistant nylon with inner towelling

ADULT SIZES: XS - S - M - L - XL - 2XL - 3XL - 4XL - 5XL

YOUTH SIZES: 4/5yrs - 6/7yrs - 8/9yrs - 10/11yrs - 12/13yrs

## FEATURES:

- Chunky durable zip
- Hem with drawstring
- 1x1 Ribbed, water repellent cuffs
- Zip away hood with toggles and drawstring
- High quality inner towelling lining for warmth and comfort



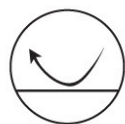
WASH & WEAR



INSULATING



WATER RESISTANT



WIND RESISTANT



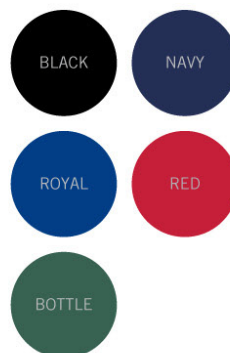
ZIP AWAY HOOD



## COLOURS AVAILABLE IN ADULT SIZES:



## COLOURS AVAILABLE IN YOUTH SIZING:



## UNISEX BODYWARMER

UNISEX PRODUCT CODE: **MBW2**

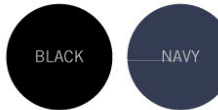


FABRIC: 100% Polyester

ADULT SIZES: XS - S - M - L - XL - 2XL - 3XL - 4XL - 5XL

### FEATURES:

- Full zip
- Outer side pockets
- Side waist toggles
- Padded for insulation
- High quality wind and water resistant fabric



## LADIES' BODYWARMER

LADIES' PRODUCT CODE: **LBW1**



FABRIC: Poly pongee with a water resistant coating

ADULT SIZES: S - M - L - XL - 2XL - 3XL - 4XL - 5XL

### FEATURES:

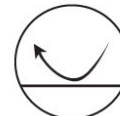
- Full reversed zip
- Outer side zipped, fleece lined pockets
- Water resistant PU coating
- Side waist toggles



INSULATING



WASH & WEAR



WIND RESISTANT



# BALLISTA PUFFER JACKET

MEN'S PRODUCT CODE: **MPJ2**

LADIES' PRODUCT CODE: **LPJ2**



FABRIC: 100% Water resistant Polyester

SIZES: S - M - L - XL - 2XL - 3XL

## FEATURES:

- Full zip
- Side pockets
- Stylish design
- Water resistant fabric
- Wadding for insulation

BLACK

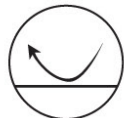
NAVY



INSULATING



WASH & WEAR



WIND RESISTANT





**ACTIVEWEAR**

# JAMMER

ADULT & YOUTH STYLE: **JAM1**



FABRIC: Polyester

ADULTS' SIZES: 32 - 34 - 36 - 38 - 40

YOUTH SIZES: 5-6y, 7-8y, 9-10y, 11-12y

## FEATURES:

- Suitable for training
- Timeless and classic design
- Stretch allows flexibility
- Internal draw string allows adjustment
- Gusset allows for a better fit
- Suitable for females to wear under shorts for sporting activities



WASH & WEAR

STRETCH

**GC** GLOBAL  
CITIZEN<sup>TM</sup>





# MALE BRIEF SWIMSUIT

MEN'S & BOYS' STYLE: **MBR1**



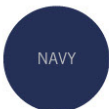
FABRIC: Polyester

MEN'S SIZES: 32 - 34 - 36 - 38 - 40

BOYS' SIZES: 5-6y, 7-8y, 9-10y, 11-12y

## FEATURES:

- Suitable for training
- Timeless and classic design
- Stretch allows flexibility
- Internal draw string allows adjustment
- Gusset allows for a better fit



# FEMALE RACERBACK SWIMSUIT

LADIES' & GIRLS' STYLE: **FRS1**



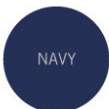
FABRIC: Polyester

LADIES' SIZES: 32 - 34 - 36 - 38 - 40

GIRLS' SIZES: 5-6y, 7-8y, 9-10y, 11-12y

## FEATURES:

- Suitable for training
- Timeless and classic racerback design
- Stretch allows flexibility
- Gusset allows for a better fit



WASH & WEAR



STRETCH





## MEN'S ACTIVE T-SHIRT

MEN'S STYLE: **MGT1**

FABRIC: Brushed polyspandex

SIZES: S - M - L - XL - 2XL - 3XL



## LADIES' ACTIVE TOP

LADIES' STYLE: **LGT1**

FABRIC: Brushed polyspandex

SIZES: S - M - L - XL - 2XL - 3XL



### FEATURES FOR BOTH STYLES:

- Quick drying fabric offering stretch
- Trendy floss stitching
- Premium quality polyspandex with stretch and moisture wicking properties
- Ideal for activewear use



WASH & WEAR



MOISTURE WICKING



STRETCH



GRAPHITE MELANGE



GRAPHITE MELANGE



Fabric offers contouring and stretch

Full length



Elasticated waist with drawstring for adjustment and side pockets



Polyspandex fabric offering stretch for comfort



## LADIES' ACTIVE PANTS

LADIES' STYLE: **LGP2**

FABRIC: Nylon spandex

SIZES: S - M - L - XL - 2XL - 3XL



WASH & WEAR



STRETCH



BLACK

## MEN'S POCKETED ACTIVE SHORTS

MEN'S STYLE: **MGS2**

FABRIC: Polyspandex

SIZES: S - M - L - XL - 2XL - 3XL



WASH & WEAR



STRETCH



MOISTURE WICKING



BLACK

# WORKWEAR COLLECTION





# HIGH VISIBILITY T-SHIRTS



CLASSIC STYLE: **STS2**  
WITH REFLECTIVE TAPE: **STS1**



FABRIC: Poly eyelet

ADULT SIZES: S - M - L - XL - 2XL - 3XL

## FEATURES:

- Dries quickly through evaporation
- STS1 has highly reflective tape for night visibility
- Creates a cool, dry zone next to the skin
- High quality poly eyelet fabric



WASH & WEAR



MOISTURE WICKING



HIGH VISIBILITY



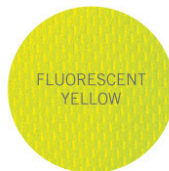
FLUORESCENT  
ORANGE



FLUORESCENT  
YELLOW



FLUORESCENT  
ORANGE



FLUORESCENT  
YELLOW





# HIGH VISIBILITY GOLFER

STYLE: **HVG1**



FABRIC: Polyester interlock

ADULT SIZES: S - M - L - XL - 2XL - 3XL

**FEATURES:**

- Dries quickly through evaporation
- Contrasting buttons to match raglan trim
- High quality polyester interlock with moisture management properties
- Raglan trim on front and back made from highly reflective tape for night visibility



FLUORESCENT  
ORANGE



FLUORESCENT  
YELLOW



WASH & WEAR



MOISTURE WICKING



HIGH VISIBILITY



# ECONO CONTI SUIT SET

---

UNISEX STYLE: **CNS2**

FABRIC: 75% Polyester 25% Cotton - 220g



## SIZES:

32 jacket, 28 trousers  
34 jacket, 30 trousers  
36 jacket, 32 trousers  
38 jacket, 34 trousers  
40 jacket, 36 trousers  
42 jacket, 38 trousers  
44 jacket, 40 trousers  
46 jacket, 42 trousers

## FEATURES:

- Chest pocket with side stitched pocket flap and 2 handy side pockets
- Concealed front zip
- Back elasticated waistband on pants
- Pants have side slant pockets and a right back pocket
- Triple-stitching on inner leg and back rise for durability
- Belt loops





# FREEZER JACKET

STYLE: **FJK1**

FABRIC: Water resistant oxford nylon

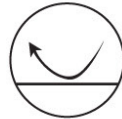
ADULT SIZES: S - M - L - XL - 2XL - 3XL

FEATURES:

- Zip away hood
- Stand up collar
- Elasticated cuffs
- Hand slot behind front pocket
- Padded for warmth and insulation



WATER RESISTANT



WIND RESISTANT



INSULATING



ZIP AWAY HOOD



BLACK



NAVY

# HIGH VISIBILITY SPARK JACKET

STYLE: **HVJ3**

FABRIC: Water resistant oxford nylon with reflective tape

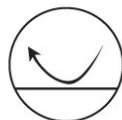
ADULT SIZES: S - M - L - XL - 2XL - 3XL

FEATURES:

- Stand up collar
- Padded for warmth and insulation
- Highly reflective tape for night visibility
- Hand slot behind front pockets
- Zip away hood



WATER RESISTANT



WIND RESISTANT



INSULATING



ZIP AWAY HOOD



HIGH VISIBILITY



BLACK/ FLUORESCENT YELLOW



# HIGH VISIBILITY JACKET

STYLE: HVJ1



FABRIC: Water resistant nylon with towelling lining

ADULT SIZES: S - M - L - XL - 2XL - 3XL

**FEATURES:**

- Chunky durable zip
- Superior quality coated nylon
- Hem with drawstring and toggles
- High quality inner towelling lining for warmth
- Highly reflective tape for night visibility
- Zip away hood



FLUORESCENT ORANGE



FLUORESCENT YELLOW

# TWO-TONE HIGH VISIBILITY PARKA JACKET

STYLE: HVJ2



FABRIC: Water resistant oxford nylon with reflective tape

ADULT SIZES: S - M - L - XL - 2XL - 3XL

**FEATURES:**

- Stand up collar
- Padded for warmth and insulation
- Highly reflective tape for night visibility
- Hand slot behind front pockets
- Zip away hood



FLUORESCENT YELLOW  
/NAVY

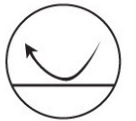


FLUORESCENT ORANGE  
/NAVY





WASH & WEAR



WIND RESISTANT



WATER RESISTANT



HIGH VISIBILITY



ZIP AWAY HOOD



INSULATING



# MEDICAL & SERVICE COLLECTION





# CINDY COVERALL

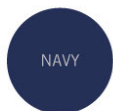
UNISEX STYLE: **CIA1MST**

FABRIC: Mini matt - 100% polyester

SIZES: XS - S - M - L - XL - 2XL - 3XL - 4XL - 5XL

**FEATURES:**

- Protects uniforms and is ideal for medical, service, beauty and promotional use
- Handy front pockets
- Engraved DUCHESS buttons
- Bound edges for a neat finish



# UDINE TOP

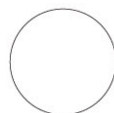
LADIES' STYLE: **UDT2**

FABRIC: Mini matt - 100% polyester

SIZES: 28 - 30 - 32 - 34 - 36 - 38 - 40 - 42 - 44 - 46 - 48 - 50 - 52 - 54

**FEATURES:**

- Piping detail
- Left breast pocket and roomy side pockets
- Side slits for comfort and ease of movement
- Pleated shoulder design



WASH & WEAR

# DUCHESS<sup>®</sup>



# BEAUTY TOP

LADIES' STYLE: **BET2KTN**

FABRIC: KOOLTRON polycotton

ADULT SIZES: 28 - 30 - 32 - 34 - 36 - 38 - 40 - 42 - 44 - 46 - 48 - 50 - 52 - 54

**FEATURES:**

- High quality KOOLTRON polycotton
- Roomy side pockets and left breast pocket
- Ideal as a medical, lab or dust coat
- Side slits for comfort and ease of movement



# SIMON UNISEX COAT

UNISEX STYLE: **SIT4KTN**

FABRIC: KOOLTRON polycotton

ADULT SIZES: 2XS - XS - S - M - L - XL - 2XL - 3XL - 4XL - 5XL

**FEATURES:**

- High quality KOOLTRON polycotton
- Roomy side pockets and left breast pocket
- Ideal as a medical, lab or dust coat
- Longer length
- Back slit for ease of movement





## TONY UNISEX COAT

SHORT SLEEVE: **TOT2KTN**

LONG SLEEVE: **TOT4KTN**



FABRIC: KOOLTRON polycotton

ADULT SIZES: 2XS - XS - S - M - L - XL - 2XL - 3XL - 4XL - 5XL

### FEATURES:

- Box pleat in back
- High quality KOOLTRON polycotton
- Roomy side pockets and left breast pocket
- Ideal as a medical, lab or dust coat



  
**VANGARD**



BLACK



NAVY



# SCRUBS

UNISEX CAP STYLE:	<b>THEATRE CAPS</b>	- THH1KTN
LADIES' TOP STYLE:	<b>LEXIE SCRUB TOP</b>	- LET2KTN
MEN'S TOP STYLE:	<b>ALEX SCRUB TOP</b>	- ALT2KTN
UNISEX PANTS STYLE:	<b>TERRY SCRUB PANTS</b>	- TEP4KTN



FABRIC: KOOLTRON polycotton

## ADULT SIZES:

Alex Scrub Top: XS - S - M - L - XL - 2XL - 3XL - 4XL - 5XL

Lexie Scrub Top: 28 - 30 - 32 - 34 - 36 - 38 - 40 - 42 - 44 - 46 - 48 - 50 - 52 - 54

Terry Scrub Pants: 28 - 30 - 32 - 34 - 36 - 38 - 40 - 42 - 44 - 46 - 48 - 50 - 52 - 54

Theatre Cap: One size fits all

## FEATURES:

- Multiple pockets on all tops and pants
- High quality KOOLTRON polycotton fabric
- ALEX and LEXIE have a comfortable V-neck design
- TERRY has an elasticated waist for comfort and is ideal for most body types
- THEATRE CAP has tiebacks

  
**VANGARD**<sup>®</sup>





# CHEF COLLECTION

Our range of culinary headwear options complete your chef outfit and are made from KOOLTRON polycotton which match the STANLEY and GORDON chef tops.

FABRIC: KOOLTRON polycotton



## CHEF HAT

STYLE: **CHH1KTN**

FEATURES:

- Adjustable hook-and-loop opening for the perfect fit



BLACK



WHITE



## BAKERY HAT

STYLE: **BAH1KTN**

FEATURES:

- Elasticated insert
- Comfortable fit



BLACK



WHITE



## DELI CAP

STYLE: **DEH1KTN**

FEATURES:

- Peak with pleated crown
- Elasticated back for the perfect fit



BLACK



WHITE

# GORDON CHEF JACKET

UNISEX STYLE: **GCJ1**

FABRIC: KOOLTRON polycotton

ADULT SIZES: 2XS - XS - S - M - L - XL - 2XL - 3XL - 4XL - 5XL

## FEATURES:

- French cuffs and mandarin chef collar
- Utility pocket on sleeve
- Double layered front design provides an extra layer of protection from hot oils
- Front layer can be reversed to adjust buttoning left over right or right over left



# STANLEY CHEF JACKET

SHORT SLEEVE STYLE: **STT2KTN**

LONG SLEEVE STYLE: **STT4KTN**

FABRIC: KOOLTRON polycotton

ADULT SIZES: 2XS - XS - S - M - L - XL - 2XL - 3XL - 4XL - 5XL

## FEATURES:

- Mandarin chef collar and french cuffs on long sleeve
- Double layered front design provides an extra layer of protection from hot oils and can be reversed (by adjusting buttoning)
- Chef buttons are customizable - black, red, white on request







VANGARD<sup>®</sup>

## CHEF PANTS

UNISEX TERRY SCRUB PANTS: **TEP4KTN**

FABRIC: KOOLTRON polycotton

ADULT SIZES: 28 - 30 - 32 - 34 - 36 - 38 - 40 - 42 - 44 - 46 - 48 - 50 - 52 - 54

### FEATURES:

- Side pockets and elasticated waist
- High quality polycotton fabric
- Both styles complement the STANLEY and GORDON chef jackets



BLACK



WHITE



Double front pockets with reinforced stitching

Durable heavy duty fabric

Back ties:



## WAIST APRON

UNISEX STYLE: **APD3**

SIZE: One size fits all

FABRIC: Polycotton twill (black, white, navy) and denim



Double front pockets with reinforced stitching

Longer length

Durable heavy duty fabric

Back ties:



## WAITER'S APRON

UNISEX STYLE: **APD201**

SIZE: One size fits all

FABRIC: Polycotton twill





Double front pockets with reinforced stitching

Durable heavy duty fabric



Back ties:

## BIB APRON

UNISEX STYLE: **APD4**

SIZE: One size fits all

FABRIC: Polycotton twill (black, white, navy, khaki, red) and denim



Durable heavy duty fabric

Double front pockets with reinforced stitching

Adjustable neck strap with long-lasting metal strap loops



Back ties:

## UTILITY APRON

UNISEX STYLE: **APD202**

SIZE: One size fits all

FABRIC: Polycotton twill (black, white, navy, khaki, red) and denim



# BEAUTY COLLECTION





## MADRI TOP

LADIES' STYLE: **MAT2**



FABRIC: Mini matt - 100% polyester

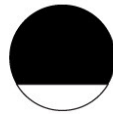
SIZES: 28 - 30 - 32 - 34 - 36 - 38 - 40 - 42 - 44 - 46 - 48 - 50 - 52 - 54

### FEATURES:

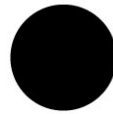
- High quality mini matt fabric with wash & wear properties
- Side slits for ease of movement
- Elegant oriental design with piping and mandarin collar
- Fabric buttons
- Back darts for a feminine fit



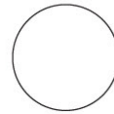
NAVY/WHITE



BLACK/WHITE



BLACK



WHITE



CHARCOAL



CHARCOAL/BLACK



DUCHESS<sup>®</sup>



# NICOLE TOP

LADIES' STYLE: NIT2



FABRIC: Mini matt - 100% polyester

SIZES: 28 - 30 - 32 - 34 - 36 - 38 - 40 - 42 - 44 - 46 - 48 - 50 - 52 - 54

## FEATURES:

- High quality mini matt fabric with wash & wear properties
- Side slits for ease of movement
- Elegant oriental design with piping
- Back darts for a feminine fit
- Mandarin collar
- Self fabric buttons



BLACK/RED



BLACK/STONE



NAVY/WHITE



SKY/NAVY



WASH & WEAR

DUCHESS<sup>®</sup>

# LILY TOP

LADIES' STYLE: **LIT2**

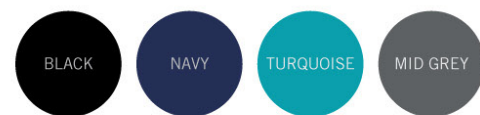
FABRIC: Lightweight mini matt - 100% polyester  
(Black and navy are slightly heavier in weight)



SIZES: 28 - 30 - 32 - 34 - 36 - 38 - 40 - 42 - 44 - 46 - 48 - 50 - 52 - 54

## FEATURES:

- Elegant square neck
- Free from zips or buttons
- Side slits for comfort and ease of movement
- High quality mini matt fabric with wash & wear properties



WASH & WEAR

**DUCHESS** 



# HEADWEAR & BAG COLLECTION

---







## CLASSIC SIX PANEL CAP

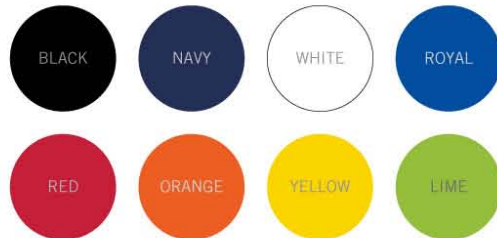
STYLE: **CMK202**

FABRIC: Brushed bull denim (100% Cotton)



### FEATURES:

- Embroidered eyelets for ventilation and styling
- Superior quality cotton fabrics used for coolness, durability and strength



## HEAVY DUTY CAP

STYLE: **CMK228**

FABRIC: Acrylic wool



### FEATURES:

- Embroidered eyelets for ventilation and styling
- Highly durable acrylic fabric with superior resistance to fading



FADE RESISTANT



## CAMO CAP

BUSH STYLE: **CMK230\***  
CLASSIC STYLE: **CMK229\***



FABRIC: Cotton twill

### FEATURES:

- Embroidered eyelets for ventilation and styling
- Durable plastic inner to retain peak shape
- Superior quality cotton fabrics used for coolness, durability and strength

\*DESIGN MAY HAVE VARIATIONS



BUSH CAMO



CLASSIC CAMO



## SIGMA HIGH VISIBILITY CAP

STYLE: **CMK6**



FABRIC: 100% Polyester

### FEATURES:

- Embroidered eyelets for ventilation and styling
- Contrast reflective trim for night visibility



FLUORESCENT ORANGE



FLUORESCENT YELLOW



HIGH VISIBILITY



## KNITTED BEANIES

STYLE: **BNV201**



FABRIC: Knitted - acrylic yarn

ADULT SIZES: One size fits all

### FEATURES:

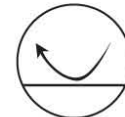
- Snug fit for warmth and comfort
- Top quality acrylic yarn for durability
- Fold up cuff to assist in fit adjustment



INSULATING



WASH & WEAR



WIND RESISTANT



STRETCH



## MELANGE KNITTED BEANIES

STYLE: **BNV5**



FABRIC: Premium knitted - acrylic yarn

ADULT SIZES: One size fits all

### FEATURES:

- Snug fit for warmth and comfort
- Top quality acrylic yarn for durability
- Fold up cuff to assist in fit adjustment







## CORPORATE & CASUAL BAG COLLECTION

---

OUR NEW BAG RANGE OFFERS A RANGE OF STYLES SUITED TO YOUR BUDGET

Keeping your personal items safe and protected is key. Browse through our range of stylish, modern and classy bags. We now offer a range of backpacks, wraps and handbags each suited to your needs. Every design has a space for your laptop as well as other items.



SCAN TO VIEW ONLINE



PETROL

## OGIO CORPORATE CITYCORP MESSENGER

STYLE: 711207

FABRIC: 600D poly/420D dobby poly



### FEATURES:

- Padded top drop-in laptop sleeve
- Audio pocket with headphone exit port
- Cell phone pocket with cell lifter
- Adjustable padded shoulder strap
- Pullman handle attachment sleeve
- Organizer panel
- Palm/calculator pocket
- Internal file separators



FILE STASH

TRAVEL ESSENTIALS

ORGANIZER PANEL

PASSPORT

PENCIL STALL



EASILY BRANDABLE

LAPTOP SLEEVE

DIGITAL MEDIA

AUDIO POCKET

CELL POCKET



BLACK

## OGIO VOYAGER MESSENGER

STYLE: 117023

FABRIC: 600D poly/420D dobby poly



### FEATURES:

- Adjustable ergonomic shoulder strap
- Three computer accessory sleeve pockets
- Mid-sized main compartment
- Organizer panel with pen loops, padded external hard drive pocket, ID card pocket
- Front zippered pocket for small items
- Quick-access cell phone sleeve pocket on front of messenger flap
- Tube cushion padded handle system and ergonomic zippers
- Hidden magazine compartment between main compartment and laptop sleeve
- Pullman handle attachment sleeve



EASILY BRANDABLE



LAPTOP SLEEVE



AUDIO POCKET



CELL POCKET



POWER CORD POCKET



MOUSE POCKET



FILE STASH



ORGANIZER PANEL



POWER SOURCE



PASSPORT



PENCIL STALL



# VISIT PROACTIVECLOTHING.COM



You can find our range online by scanning the QR codes available on each product page or by visiting our mobile-friendly site, [www.proactiveclothing.com](http://www.proactiveclothing.com).

Our site has been designed to help you find products with ease. Use our new filter functionality to find products by colour, category, fabrics, brand, features, and more. Find out about the features available to you by reading below:

Download high resolution images



**Katana Softshell Jacket**  
Manufacturer: Global Citizen  
SKU: M552  
★★★★★

Quality and style bring you the GLOBAL CITIZEN Katana Softshell Jacket. This trendy but classic jacket is a comfortable fit and offers water resistance and insulation for those chilly days!

DISPLAY ETA & QUANTITIES

Black

	Small	Medium	Large	XL
In stock	300+	300+	300+	300+
ETA	13-04-2023	13-04-2023	13-04-2023	13-04-2023
Incoming	400	875	1000	650

	2XL	3XL	4XL	5XL
In stock	235	117	54	31
ETA	13-04-2023	13-04-2023	13-04-2023	13-04-2023
Incoming	250	125	50	55

Navy

Share:

Our search functionality is smarter with suggestive search allowing you to search any term similar to the descriptive name. For example, 'apron' will bring up all aprons as well as similar looking items like the Cindy coverall.

Drop down to view stock available, incoming stock and estimated arrival dates.

Scroll down online to view product information.



# PRODUCT ICONS



REACTIVE DYED

A superior quality dyeing process ensures brighter colours and prevents fibers from weakening during the printing process



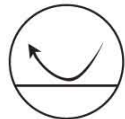
WATER RESISTANT

Fabric has water resistant properties



WASH & WEAR

Garments require little or no ironing and are often crease resistant



WIND RESISTANT

Fabric has wind resistant properties



MOISTURE WICKING

The garment contains breathable moisture management fabric which wicks perspiration from the skin to the outer surface and dries quickly through evaporation



FADE RESISTANT

Product offers superior resistance to fading



HIGH VISIBILITY

The garment contains fluorescent colours and/or reflective tape to increase visibility



ZIP AWAY HOOD

Concealed hood that is sewn and hidden in the garment's collar and can be accessed via a zip or hook-and-loop.



COMBED COTTON

A process where the shorter cotton fibres are discarded and impurities removed, making the yarn stronger, smoother, softer and more compact



INSULATING

Garment contains a fabric or yarn that provides insulating properties.



STRETCH

Fabric offers multi-dimensional stretch allowing flexibility and a more tailored fit



ANTI-PILL

Garment is made from a material that does not form pills or that resists pilling.

# CODE INDEX

## T-SHIRTS & TOPS

CTH201	145G CLASSIC COTTON T-SHIRT	5
CTH5	URBAN LIFESTYLE T-SHIRT	3
CTH6	HEAVYWEIGHT LIFESTYLE T-SHIRT	3
CTH7	URBAN YOUTH LIFESTYLE T-SHIRT	3
CTL1	150G FASHION FIT T-SHIRT - S/S	8
CTL4	150G FASHION FIT T-SHIRT - L/S	8
CTV3	URBAN LIFESTYLE V-NECK T-SHIRT	2
CTV4	HEAVYWEIGHT LIFESTYLE V-NECK SHIRT	2
KMT4	CLASSIC YOUTH SPORTS T-SHIRT	11
LRB1	LADIES RACERBACK TOP	6
LTB4	150G LADIES FASHION FIT T-SHIRT - L/S	7
LTL1	150G LADIES FASHION FIT T-SHIRT - S/S	7
LVC4	LADIES LIFESTYLE VESTS	6
MMT4	CLASSIC SPORTS T-SHIRT	11
MMT5	COOLMAX SPORTS T-SHIRT	9
MMT6	LIFESTYLE SPORTS T-SHIRT	10
MVC1	MENS LIFESTYLE VESTS	6

## POLOS & GOLF SHIRTS

CGU3	PENCIL STRIPE GOLFER	19
CGU6	DELTA GOLFER	19
GLFP8	LADIES CLASSIC HEAVY WEIGHT POLO	14
GLFP9	LADIES STRATUS POLO	18
GLMX7	LADIES MATRIX POLO	24
GLMX8	LADIES SYNERGY POLO	24
GLMX9	LADIES VECTOR POLO	24
GMFP8	CLASSIC HEAVY WEIGHT POLO	14
GMFP9	STRATUS POLO	18
GMMX7	MATRIX POLO	24
GMMX8	SYNERGY POLO	24
GMMX9	VECTOR POLO	24
KPK2	YOUTH CLASSIC PIQUE KNIT POLO	16
LPK2	LADIES CLASSIC PIQUE KNIT POLO	16
LSB5	LADIES FLAT PIPING POLO	20
MFP5	FLAT PIPING POLO	20
MSP2	LIFESTYLE SPORTS POLO	22
PKD201	CLASSIC PIQUE KNIT POLO	16
PKD3	LONG SLEEVE PIQUE KNIT POLO	17
SIE8	CLASSIC MICRODOT POLO	21

## SHIRTS & BLOUSES

CAS2C3	CAMERON SHIRT - CHECK DESIGN 3 - S/S	38
CAS4C3	CAMERON SHIRT - CHECK DESIGN 3 - L/S	38
CAS2OPC	CAMERON SHIRT - S/S	33
CAS2S5	CAMERON SHIRT - STRIPE DESIGN 5 - S/S	34
CAS4OPC	CAMERON SHIRT - L/S	33
CAS4S5	CAMERON SHIRT - STRIPE DESIGN 5 - L/S	34
DOB2S5	DONNA BLOUSE - STRIPE DESIGN 5 - S/S	34
DOB3C3	DONNA BLOUSE - CHECK DESIGN 3 - 3/4	38
DOB4S5	DONNA BLOUSE - STRIPE DESIGN 5 - L/S	34
EMM1	EMMA BLOUSE - S/S	36
EMM2	EMMA BLOUSE - L/S	36
HAR1	HARPER BLOUSE	32
ISA1	ISABELLA BLOUSE	26
LBS2	LADIES VENTURE BUSH SHIRT	40
LWP1	LADIES TRACTION PIT CREW SHIRT	39
LWS1	LADIES CLASSIC WOVEN SHIRT - S/S	29
LWS2	LADIES CLASSIC WOVEN SHIRT - L/S	29
LWS8	LADIES ICON WOVEN SHIRT - 3/4	28
MAS2C1	MATTHEW SHIRT - CHECK DESIGN 1 - S/S	37
MAS4C1	MATTHEW SHIRT - CHECK DESIGN 1 - L/S	37
MBS2	VENTURE BUSH SHIRT	40
MWP1	TRACTION PIT CREW SHIRT	39
MWS1	CLASSIC WOVEN SHIRT - S/S	29
MWS2	CLASSIC WOVEN SHIRT - L/S	29
MWS8	ICON WOVEN SHIRT - S/S	39
MWS9	ICON WOVEN SHIRT - L/S	39
ROB2C1	ROSELINA BLOUSE - CHECK DESIGN 1 - S/S	37
ROB2OPC	ROSELINA BLOUSE - S/S	33
ROB4OPC	ROSELINA BLOUSE - L/S	33
ROB4C1	ROSELINA BLOUSE - CHECK DESIGN 1 - L/S	37
WSC202	PRIME WOVEN SHIRT - S/S	31
WSC203	PRIME WOVEN SHIRT - L/S	31

## CORPORATE COLLECTION

AVZ1	AVA SKIRT	52
BEP4	BERLEI PANTS	48
CLD1	CLAIRE DRESS	51
CPF4	5 POCKET CHINOS	50
DIZ6	DIDI SKIRT - 60CM	52
ELP1	ELLA PANTS	45
EVA1	EVA PANTS	46
FRJ1	FREYA GILET	44
HRV1	HARVEY JACKET	44
JFP2	STRETCH JEANS	49
JOW1	JOHN WAISTCOAT	42
LBT1	LADIES BENGALINE PANTS	45
LIZ6	LIZE SKIRT	52
LJF1	LADIES STRETCH JEANS	49
MIK1	MIKE PANTS	50
PAP4	PATRICIA PANTS	47
PAW1	PAULA WAISTCOAT	42
ROJ2	ROSA JACKET - SHORT SLEEVE	44
ROJ4	ROSA JACKET - LONG SLEEVE	44
SAP4	SALIS PANTS	47
SAR1	SARAH DRESS	51
TEP4MST	TERRY PANTS	48
ZOE1	ZOE PANTS	46

## FLEECE & KNITWEAR

BLJ1	BELLE FLEECE - SLEEVELESS	57
BMJ1	BEAU FLEECE - SLEEVELESS	57
JR11	TRIDENT SLEEVELESS JERSEY	59
JR12	TRIDENT LONG SLEEVE JERSEY	59
JR15	UPMARKET SLEEVELESS JERSEY	60
JR16	UPMARKET LONG SLEEVE JERSEY	60
KEJ4	KELLY CARDIGAN	62
LFQ3	LADIES ZIP OFF SLEEVE POLAR FLEECE	56
LKC1	LADIES CLASSIC CARDIGAN	61
LPM201	LADIES CLASSIC MICROFIBRE POLAR FLEECE	54
LPM4	LADIES SABRE ANTI-PILL MICROFIBRE FLEECE	55
PFH4	GLADIUS PULLOVER HOODIE	58
PFM3	CLASSIC MICROFIBRE POLAR FLEECE	54
PFM4	SABRE ANTI-PILL MICROFIBRE FLEECE	55
PFQ203	ZIP OFF SLEEVE POLAR FLEECE	56

## JACKET COLLECTION

AWJ202	ALL WEATHER MACJACK	68
KAW202	YOUTH ALL WEATHER MACJACK	68
LBW1	LADIES BODYWARMER	69
LPJ2	LADIES BALLISTA PUFFER JACKET	70
LSS1	LADIES CLASSIC SOFTSHELL JACKET	66
LSS2	LADIES KATANA SOFTSHELL JACKET	64
MBW2	BODYWARMER	69
MPJ2	BALLISTA PUFFER JACKETS	70
MSS1	CLASSIC SOFTSHELL JACKET	66
MSS2	KATANA SOFTSHELL JACKET	64

## ACTIVEWEAR

FRS1	FEMALE RACERBACK SWIMSUIT	74
JAM1	JAMMER	72
LGP2	LADIES ACTIVE PANTS	76
LGT1	LADIES ACTIVE TOP	75
MBR1	MALE BRIEF SWIMSUIT	74
MGS2	MENS POCKETED ACTIVE SHORTS	76
MGT1	MENS ACTIVE T-SHIRT	75

## WORKWEAR COLLECTION

CNS2	CONTI SUITS	80
FK1	FREEZER JACKET	82
HVG1	HIGH VISIBILITY GOLFER	79
HVJ1	HIGH VISIBILITY JACKET	82
HVJ2	TWO-TONE HIGH VISIBILITY PARKA JACKET	83
HVJ3	HIGH VISIBILITY SPARK JACKET	82
STS1	HIGH VISIBILITY T-SHIRT (WITH TAPE)	78
STS2	CLASSIC HIGH VISIBILITY T-SHIRT	78

## MEDICAL & SERVICE COLLECTION

ALT2KTN	ALEX SCRUB TOP	90
BET2KTN	BEAUTY TOP	87
CIA1MST	CINDY COVERALL	86
LET2KTN	LEXIE SCRUB TOP	90
SIT4KTN	SIMON UNISEX COAT	87
TEP4KTN	TERRY SCRUB PANTS	90
THH1KTN	THEATRE CAP UNISEX	90
TOT2KTN	TONY UNISEX COAT - SHORT SLEEVE	88
TOT4KTN	TONY UNISEX COAT - LONG SLEEVE	88
UDT2MST	UDINE TOP	86

## CHEF COLLECTION

APD201	WAITER'S APRON	95
APD202	UTILITY APRON	96
APD3	WAIST APRON	95
APD4	BIB APRON	96
BAH1KTN	BAKERY HAT	92
CHH1KTN	CHEF HAT	92
DEH1KTN	DELI CAP	92
GCJ1	GORDON CHEF TOP	93
STT2KTN	STANLEY CHEF JACKET - SHORT SLEEVE	93
STT4KTN	STANLEY CHEF JACKET - LONG SLEEVE	93
TEP4KTN	TERRY SCRUB PANTS	94

## BEAUTY COLLECTION

LIT2	LILY TOP	100
MAT2	MADRI TOP	98
NIT2	NICOLE TOP	99

## HEADWEAR & BAG COLLECTION

117023	OGIO VOYAGER MESSENGER	108
711207	OGIO CORPORATE CITY CORP MESSENGER	107
BAG001-9	CORPORATE & CASUAL BAG COLLECTION	106
BNV201	KNITTED BEANIES	104
BNV5	MELANGE KNITTED BEANIES	104
CMK202	CLASSIC SIX PANEL CAP	102
CMK228	HEAVY DUTY CAP	102
CMK229	CLASSIC CAMO CAP	103
CMK230	BUSH CAMO CAP	103
CMK6	SIGMA HIGH VISIBILITY CAP	103





proactiveclothing.com

